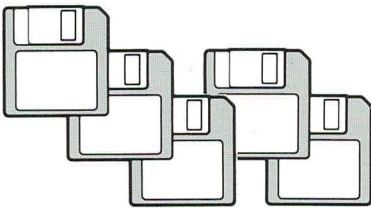
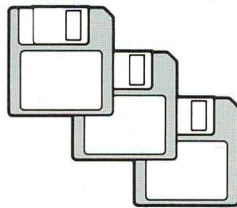


FOR A  
**QUICK START**  
WITH YOUR  
**2810 HD**

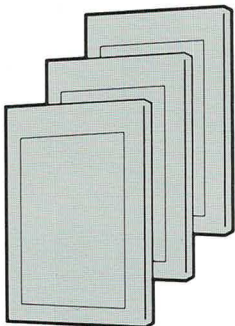
*Be sure you have  
the following items:*



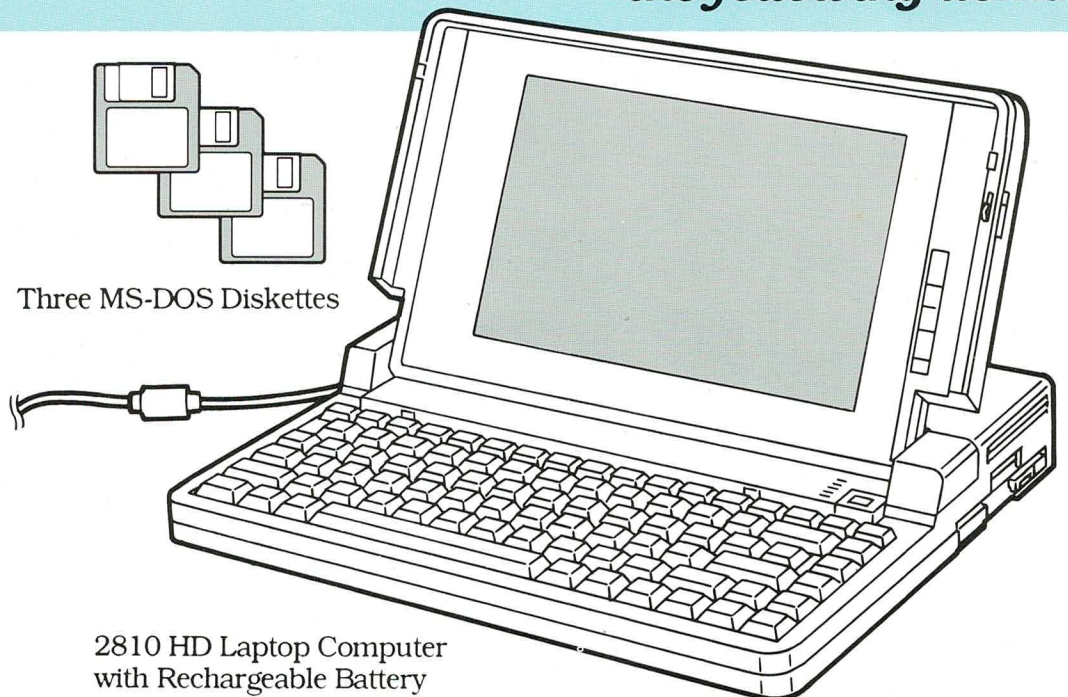
Five DeskMate Diskettes



Three MS-DOS Diskettes

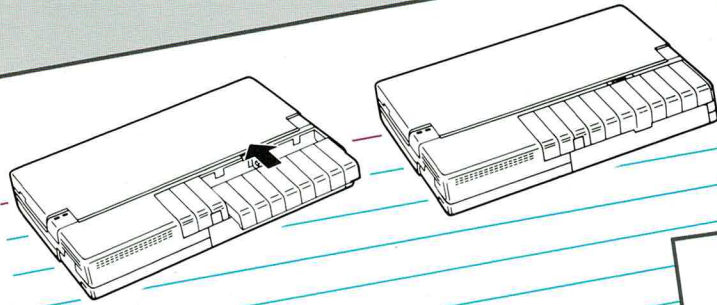


2810 HD Documentation

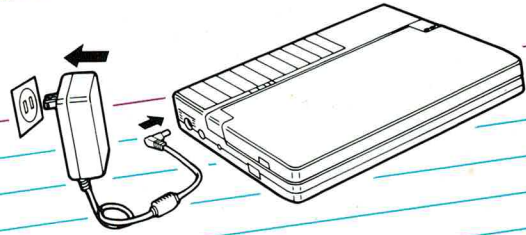


2810 HD Laptop Computer  
with Rechargeable Battery

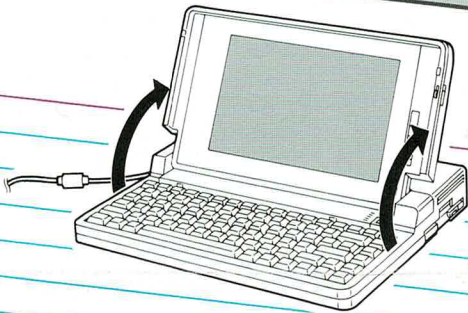
Here's how to put it all together ... **in 4 easy steps!**



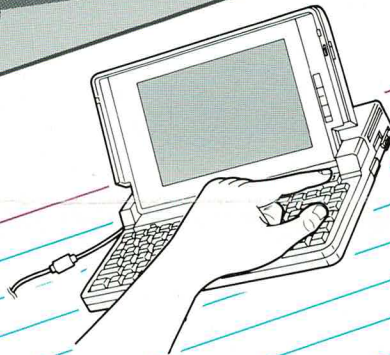
**1.** Slide the battery into the battery compartment.



**2.** Insert the AC adapter's barrel connector into the DC IN 16V jack. Then, plug the adapter into a standard AC outlet.



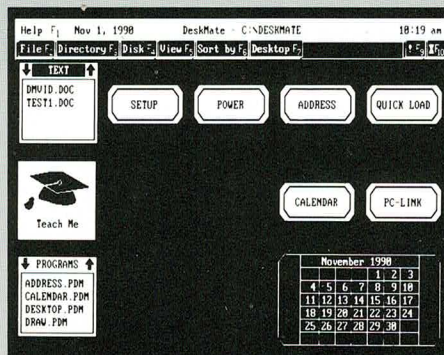
**3.** Slide the spring-loaded latches on each side of the cover toward the front of the computer and raise the display panel.



**4.** Press down the power switch for about 1 second to turn on the computer.

**That's it!**

The first DeskMate screen you'll see is the desktop.



**Now,** open your Tandy 2810 HD *User's Guide* to learn more about your system.